

Exclusive: Operation Excalibur in Los Angeles Was Show of Force

Leaks from military's LA deployment reveal Coca Cola vs. Pepsi rivalry, sweaty guardsmen, and abject failure

KEN KLIPPENSTEIN

JUL 07, 2025

361

17

104

Share



Federal agents deployed to LA's MacArthur Park today

Type your email...


Subscribe

Today's homeland security operation at the 35-acre MacArthur Park in the Westlake neighborhood of Los Angeles was a mere "show of presence," internal Army documents I've obtained say. ICE and Customs agents, many dressed in

military garb, assaulted the Park, which the documents describe as a hotbed of “historic lawlessness” and “the founding location of MS-13,” the Salvadoran gang.

The news media is describing the operation as an ominous crackdown, but National Guard sources tell me that it was a botched laughingstock. The military aspect of the operation, codenamed Operation Excalibur, has not been previously reported.

The documents reveal that the erstwhile justification for the operation was to try to shut down the distribution of fake IDs. The mission of the 1st Squadron, 18th Cavalry is described as protecting DHS [Department of Homeland Security] “security points and blocking positions” while they undertook their assault. The Squadron was ordered not to “restrict pedestrian movement” and not to “conduct law enforcement activities.”)

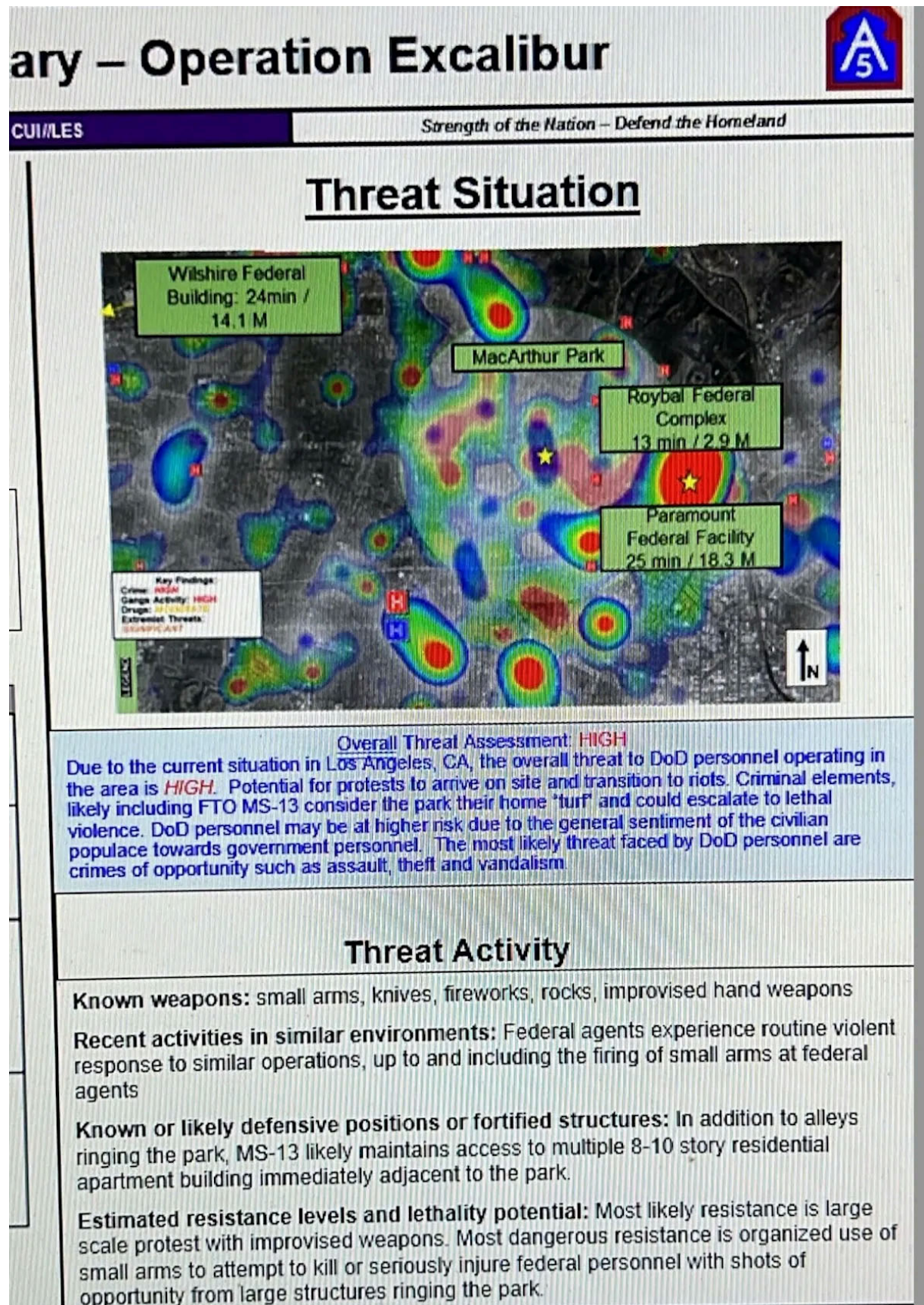
Operation Excalibur Executive Summary	
U. S. Army North (Fifth Army)	CU/LES
<h3>Civil Analysis</h3> <p>Civilian population density in target area and potential for collateral damage: High density of civilians in complex urban terrain, moderate to high potential for collateral damage if threat activity requires use of lethal force in a kinetic engagement.</p>  <p>Population Local Population density is High; Estimate is nearly 20,000 People live in the adjacent blocks to MacArthur Park. Majority of Buildings are Mixed-Use Commercial/Residential with Medium to High Density.</p> <p>Local Law Enforcement DHS will provide two hours notice of the operation to LAPD; LAPD will provide law enforcement response unrelated to immigration enforcement.</p> <p>Important Landmarks</p> <ol style="list-style-type: none">1) Consulate General of Mexico in Los Angeles2) Department of Public Social Services, County of Los Angeles3) Charles White Elementary School4) MacArthur Elementary School5) Grandview Retirement Center6) Harold McAlister High School7) Solidaridad Charter School	<p>Mission: On order, 1-18th Cavalry Squadron provides static interagency site protection, mounted mobile security, and Joint Force Land Component Command (JFLCC) Reserve support to Customs and Border Patrol (CBP) and supporting federal agencies, whose intent at MacArthur Park is to demonstrate, through a show of presence, the capacity and freedom of maneuver of federal law enforcement within the Los Angeles Joint Operations Area (JOA).</p> <p>Purpose: The purpose of this operation is to enable and protect the execution of joint federal law enforcement missions in a high-visibility urban environment, while preserving public safety and demonstrating federal reach and presence.</p> <p>Key Tasks:</p> <ol style="list-style-type: none">1. <u>Secure Key Terrain:</u> Protect DHS security points and blocking positions.2. <u>Provide Area Security:</u> Safeguard federal personnel and designated federal property.3. <u>Enable Civil Freedom of Movement:</u> Do not restrict pedestrian movement.4. <u>Support Law Enforcement:</u> Do not conduct law enforcement activities; detain individuals only in response to an imminent threat and transfer to law enforcement as soon as practicable.5. <u>Comply with Rules for the Use of Force:</u> Operate IAW Standing Rules for the Use of Force (SRUF); use force only when authorized and necessary. <p>End state: (Friendly) 1-18th CAV forces remain postured to respond to emergent requirements, then successfully retrograde in an organized manner without incident. (Threat) Potential civil unrest is deterred or contained in the supported area. (Terrain) Federal personnel and property in the vicinity of MacArthur Park remain secure, with DHS personnel at security positions and DHS outer cordon maintained without disruption. (Civil Considerations) Civilian movement remains unrestricted, no Civilian harm, and interactions with the local population are professional, disciplined, and in accordance with mission guidance and SRUF.</p>

"On order, 1-18th Cavalry Squadron provides static interagency site protection, mounted mobile security, and Joint Force Land Component Command (JFLCC) Reserve support to Customs and Border Patrol (CBP) and supporting federal agencies, whose intent at MacArthur Park is to demonstrate, through a show of presence, the capacity and freedom of maneuver of federal law enforcement within the Los Angeles Joint Operations Area (JOA)."



The operation was meticulously planned, the threat listed as “HIGH.”

“Criminal elements, likely including FTO [foreign terrorist organization] MS-13 consider the park their home ‘turf’ and could escalate to lethal violence,” a threat assessment warned.



Then all that planning went bust.

Because ICE and CBP apparently failed to communicate or coordinate effectively, the military showed up too late (and Los Angeles authorities weren't notified until two hours prior.)

"We were on the objective for 24 minutes," a National Guard member told me. "Many of the phase lines were not reported because they didn't happen. So we parked and then left. Soldiers didn't get out of trucks. [They] stayed in the back of the 5-tons [military trucks] sweating in the heat."

This is just the latest operation that didn't go off as planned, amplifying the sense amongst the California Guardsmen that the whole spectacle is idiotic and shameful. Part of the reason for the confusion is the sheer number of government agencies involved. In this operation, according to the documents, nine different federal agencies (including the IRS) were given radio code names based on soda brands (Pepsi, Coke, 7-UP, etc.) —that is, except for ICE, which was codenamed "Inca," which may or may not be the Peruvian cola of the same name.

Canceled	10	13
Mission	7	125
Received	1	
Assigned	2	
PAX	125	125
ATF	A&W	
CBP	Canada Dry	
DEA	Dr. Pepper	
FBI	Coke	
FPS	Fanta	
HSI	Hank	
ICE/ERO	Inca	
USMS	7-UP	
IRS	Sprite	
LASD	R/C	
LAPD	Pepsi	

Leaked copy of agency codenames

One Army source told me that it all felt like some joint military operation overseas, where soldiers need to identify themselves as “friendlies” on congested battlefields.




Treating Los Angeles as a foreign country with insurgents to be defeated, military and homeland security intelligence views MacArthur Park as a viper’s nest of illegality. An intelligence briefing produced by Army North, the task command overseeing military operation, says of the “symbolic significance” of the park:

“The founding location of MS-13, MacArthur park represents an area of historic lawlessness where criminal organizations openly defy local and federal law, including immigration law.”

The Park, the same briefing says, is also “the largest open-air market” of fake IDs facilitating human trafficking in the entire Southwest. Per the briefing:

“MacArthur park functions as the largest open-air market of fake identification to enable illegal immigration and human trafficking in the Southwest United

States. Entire sections of the 35 square acre park host open buying and selling of fake identification and other illegal goods in broad daylight. Federal agents confirmed that these activities continued at MacArthur park within the last week.”

MacArthur Park Background Update		
 U. S. Army North (Fifth Army)	 CUI//LES	 Strength of the Nation – Defend the Homeland
MacArthur Park as an Immigration Enforcement Objective MacArthur park functions as the largest open-air market of fake identification to enable illegal immigration and human trafficking in the Southwest United States. Entire sections of the 35 square acre park host open buying and selling of fake identification and other illegal goods in broad daylight. Federal agents confirmed that these activities continued at MacArthur park within the last week.	Customs and Border Patrol (CBP) Intent for MacArthur Park Operations CBP intends to conduct a large patrol of MacArthur park to detect, detain or deter activity that enables illegal immigration and human trafficking while demonstrating the ability of federal agencies to conduct law enforcement operations anywhere in Los Angeles. CBP “Clear” definition in this operation: Dismounted presence patrol for consensual encounters across the entirety of a designated area <ul style="list-style-type: none">-NO FAST ROPE INSERTION; ROTARY WING FOR MEDEVAC ONLY-REDUCED TRAFFIC CONTROL POINTS (TCP)-SIMPLIFIED SCHEME OF MANEUVER TO REDUCE TIME ON TARGET-UPDATED ABORT CRITERIA TO INCLUDE IDENTIFICATION OF 1,000 PAX OR LARGER PROTEST WITHIN 3 MILES OF PARK-CBP PLANS TO USE HORSES IN NORTH END OF PARK FOR PRESENCE AND CONTINGENCY CROWD CONTROL- NO BOAT IN LAKE-SLOW MOVEMENT THROUGH PARK FOR CONSENSUAL ENCOUNTERS-NO RESTRICTION OF PEACEFUL MOVEMENT OF INDIVIDUALS TO/THROUGH/FROM PARK	
MacArthur Park Symbolic Significance The founding location of MS-13, MacArthur park represents an area of historic lawlessness where criminal organizations openly defy local and federal law, including immigration law.		

No word yet on the role of the junior varsity sodas — the Los Angeles Police Department or Pepsi and the Los Angeles Sheriff’s Department or R/C (Royal Crown) — in this chaotic operation, but members of the Los Angeles City Council have previously contacted me asking if I could explain to them what the federal government is up to in the park.

Many of the soldiers involved, I’m told, view their mission as unnecessary and even ridiculous, with the Trump administration ordering the spectacle and the Pentagon leadership and chain of command smartly saluting.

TF 51 - Executive Summary – MacArthur Park

U. S. Army North (Fifth Army)

CUI

Strength of the Nation – Defend the Homeland

EXAMPLE Task Organization

LTC Soto
CDR Element
8 (-) 1-18 CAV
79 BCT

1-18 BCT
2-18 BCT
3-18 BCT
4-18 BCT
5-18 BCT

2 x HMMWV
2 x FLA
12 x pax (DOD)

8 x HMMWV
2 x LMTV
22 x pax (DOD)
24 x MRT
6 x DHS Vehicles

8 x HMMWV
2 x LMTV
22 x pax (DOD)
24 x MRT
6 x DHS Vehicles

8 x HMMWV
16 x pax (DOD)
24 x MRT
2 x DHS Vehicles

6 x JLTV
20 x pax (DOD)
4 x MRT (Escort)
2 DHS Vehicles

RFI: MRT Task Organization, Composition, Disposition, & Integration Plan

MODE	VEHICLES/EQUIPMENT	LEAD/CS	PAX CT	PAX BY POSITION/KEY LOG NAMES
Lead Element C		 "Character 8"	18	1-18 BCT 2-18 BCT 3-18 BCT 4-18 BCT 5-18 BCT
ROGN TAC II S-28CA		 "SABER 8"	17	1-18 BCT 2-18 BCT 3-18 BCT 4-18 BCT 5-18 BCT
Main Body A		 "Apache 8"	22	1-18 BCT 2-18 BCT 3-18 BCT 4-18 BCT 5-18 BCT
B		 "Bravo 8"	22	1-18 BCT 2-18 BCT 3-18 BCT 4-18 BCT 5-18 BCT

Threat Situation

Critical Incident Overview 9-14 June 2025

Overall Threat Assessment: HIGH

Due to the current situation in Los Angeles, CA, the overall threat to DoD personnel operating in the area is HIGH. Potential for protests to arrive on site and transition to riots. Criminal elements likely including MS-13 consider the location their home "turf" and could escalate to lethal violence. DoD personnel may be at higher risk due to the general sentiment of the civilian populace towards government personnel. The most likely threat faced by DoD personnel are crimes of opportunity such as (assault, theft and vandalism).

Known weapons: IF NOT APPLICABLE PUT N/A

Recent activities in similar environments: Federal agents experience routine organized violent response to similar operations, up to and including the firing of small arms at federal agents

Known or likely defensive positions or fortified structures: DESCRIBE ANY EXISTING OBSTACLES THAT COULD INCREASE TIME ON TARGET AND THUS INCREASED LIKELIHOOD OF PROTEST RESPONSE

Estimated likelihood of planned or potential protest: Outline recent protest activity in vicinity of mission objective locations, describe size and nature of activity, describe most likely and most dangerous protest activity.

Similarly last month, when leadership discussed during a briefing the idea of having Guardsmen wear masks similar to ICE and CBP, rank-and-file members groaned at the stupidity and bad optics for the uniformed military. The Guard, they said, should be seen as members of the community, not shadowy interlopers.

Mayor Karen Bass, as if an interloper in her own city, rushed to MacArthur park in her own SUV motorcade and asked the feds to leave. Bass told the Los Angeles Times that the feds needed “to leave and they need to leave right now, they need to leave because this is unacceptable.”

The uniformed military I’ve spoken to seem to agree with her.

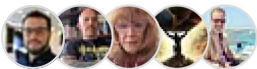
While military leadership is embracing the Washington-inspired mission, sources say, the rank-and-file see the California operation as more akin to Afghanistan: doomed to failure and ultimately withdrawal.

I’m committed to providing you with documents other media refuse to publish; please become a paid subscriber so I have the resources for this time-consuming work

Type your email...

Subscribe

— Edited by William M. Arkin



361 Likes · 104 Restacks

Discussion about this post

Comments

Restacks



Write a comment...



B C 3h ⋮

♥ Liked by Ken Klippenstein

Lightning fast response from Ken Klip! What a shitshow - I feel for the Guardsmen forced to participate in this total clownfuck.

♥ LIKE (48) 💬 REPLY ↗ SHARE



Mathew Foresta 2h ⋮

♥ Liked by Ken Klippenstein

Lol bro they make it sound like it's some kind of comic book gangster's hideout. It's just a park. There are a lot of street vendors and houseless folks, and ya some immigrants do go down there to try and get IDs so they can get a job and live their life. The fact that that seems to inspire the need for